



VictorReader Stream 2 knowledge levels

Using the Stream 2 with wireless networks

The Stream 2 has an internal wireless chip. This allows it to connect to wireless networks for various functions.

The Stream 2's wireless chip supports the use of the 802.11b, g and n wireless modes. All the main wireless encryption protocols are also supported - WEP, WPA-PSK and WPA2-PSK.

The Stream 2 can be connected to a wireless network for two purposes currently:

- Access to internet radio stations.

Refer to "Using internet radio" for information about using the internet radio feature on the Stream.

- The downloading of Stream 2 internal software updates over the internet.

Enabling / disabling the WiFi function

It is possible to enable and disable the WiFi function on the Stream 2 (effectively, you can turn WiFi on or off).

To toggle the status of the WiFi function (between On and Off), press and hold the **Online key**.

When the WiFi function is turned Off, Airplane Mode is activated. (By default, Airplane Mode is enabled on the Stream 2).

WiFi LED indicator

There is a small LED light just above and to the right of the Online button. This is the WiFi indicator light. When the Stream is connected to a wireless network, the LED will glow solidly with an amber light. When the Stream is attempting to connect to a wireless network, the LED light will blink with an amber light. When the Stream is not connected to a wireless network and Airplane Mode is enabled, the LED light will be turned off.

Accessing the Wireless Menu

The Wireless Menu is used for all the wireless functions on the Stream 2. To access the Wireless Menu, press and release the Online button, and then quickly press and release **Key 7**. The Wireless Menu will be opened.

To exit the Wireless Menu, press the **Cancel (Star) key**.

The Wireless Menu contains the following options:

- Airplane Mode. When this option is Enabled, WiFi is turned on, and the following options will then be available also.
- Import a network configuration from file - this option is used to import a network configuration file into the Stream from the HumanWare Companion software
- Scan for available connections - this option is used to scan for available wireless network connections
- Launch a connection - this option is used for initiating a wireless network connection from the Stream
- Create a new connection - this option is used for configuring a new wireless network connection and inputting all the network details manually
- Delete a connection - this option is used for deleting existing wireless network connections
- Validate connection - this option is used for checking that an existing wireless network connection is valid and active and can be used to connect to the internet

To move through the items in the menu, use the **Keys 2 and 8**.

To move to the previous item in the menu, press **Key 2**.

To move to the next item in the menu, press **Key 8**.

To select an item, move to the desired item, and then press the **Confirm key**.

Connecting to a wireless network

There are two methods available for connecting the Stream 2 to a wireless network:

- Scanning for a network and entering the appropriate details, or entering all the details without scanning
- Setting up a network configuration file and importing it through the HumanWare Companion software

Scanning for a wireless network

To scan for a wireless network, follow these steps;

Press the Online key, then press **Key 7**. You will be placed in the Wireless Menu.

Press **Key 8** until you get to the "Scan for available connections" item. Press the Confirm key.

You will be placed in the list of available wireless network connections. The Stream 2 will announce the details of the first network connection that has been found (if none are found, you will be informed of this). The Stream 2 will announce the SSID of the network, and the current signal strength.

To move through the list of available network connections, use the **Keys 2 and 8**.

To attempt to connect the Stream 2 to a wireless network, move to the desired network connection in the list, and then press the **Confirm key**.

You will be prompted "Enter password". You now need to type the wireless network key for the network connection.

The Stream 2's keypad will automatically be put into the text entry mode at this point.

The key assignments are as follows (default English Stream 2):

Key 1: 1, period, comma, question mark, hyphen/dash, forward slash, colon, semi-colon, apostrophe, quotation mark, backslash, less than sign, greater than sign, left square bracket, right square bracket

Key 2: a, b, c, 2

Key 3: d, e, f, 3

Key 4: g, h, i, 4

Key 5: j, k, l, 5

Key 6: m, n, o, 6

Key 7: p, q, r, s, 7

Key 8: t, u, v, 8

Key 9: w, x, y, z, 9

Key 0: space, 0, exclamation mark, at (@) sign, number sign, dollar sign, percent sign, circumflex, ampersand, asterisk, left parentheses, right parentheses, underscore, plus sign, equals sign, pound sign, euro currency sign, yen sign

To toggle capitalisation On / Off, press the **Bookmark key**.

As of software version 4.3.4, the Stream has a choice of two text entry modes. Refer to "Using multi-tap text entry modes" for information about the two text entry modes and how you can select the desired mode to use.

If you are using the "Announce character on each key press and enter character after pause" method:

Press the appropriate number key the appropriate number of times. For example, to enter B, press **Key 2** twice. The entered character is announced by Stream 2 when you have finished pressing the appropriate key. In addition, any other characters assigned to that key are also announced as you pass through them, for example A on Key 2 if you're entering a B.

If you are entering consecutive characters that are assigned to the same key, e.g. AB, you need to pause after entering the A until Stream 2 announces "A". You can then enter the B.

If you are entering consecutive characters that are assigned to different keys, e.g. TA, you do not need to pause between entering characters.

If you are using the "Announce final character only" method:

Press the appropriate number key the appropriate number of times. For example, to enter B, press **Key 2** twice. The entered character is announced by Stream 2 when you have finished pressing the appropriate key (however, any other characters assigned to that key are not announced as you pass through them, for example A on Key 2 if you're entering a B).

If you are entering consecutive characters that are assigned to the same key, e.g. AB, you need to pause after entering the A until Stream 2 announces "A". You can then enter the B.

If you are entering consecutive characters that are assigned to different keys, e.g. TA, you do not need to pause between entering characters.

When you have entered the desired characters for the wireless key, press the **Confirm key** or the **Play/Stop key**.

The Stream 2 will attempt to connect to the selected wireless network. The Stream 2 will announce "Please wait" whilst it is attempting to connect to the wireless network.

If the connection attempt is successful, you will be prompted "Connected to xx", where "xx" is the name of the selected network.

OR

If the connection attempt is unsuccessful, you will be prompted "Unable to connect to xx", where "xx" is the selected network's SSID (name). You will then be placed back at the "Enter password" prompt, where you can type in the appropriate wireless network key again and make another attempt to connect to the selected wireless network.

When the connection has been made successfully, you will now be prompted to enter a nickname. This is a meaningful name to refer to the connection by. Type the desired nickname for the network, using the same text entry. Then, press the **Confirm key**.

You will then be prompted "Connected to xx", where "xx" is the new nickname that you have set for this wireless network connection.

The Stream 2 is now connected to the wireless network.

You can now exit the Wireless Menu by pressing the **Cancel (Star) key**.

Manually configuring a wireless network connection

To manually configure a wireless network connection, follow these steps;

Press the Online key, then press **Key 7**. You will be placed in the Wireless Menu.

Press **Key 8** until you get to the "Create a new connection" item. Press the **Confirm key**.

You will be prompted "Enter an SSID". You need to type the SSID of the network that you want to connect to here (the SSID is the network's name). The Stream 2's keypad will automatically be put into the text entry mode at this point. Use the standard Stream 2 text entry method. When you have typed the SSID of the network, press the **Confirm key**.

You will be prompted "Enter password". You now need to type the wireless network key for the network connection.

The Stream 2's keypad will automatically be put into the text entry mode at this point. Use the standard Stream 2 text entry method. When you have typed the wireless password, press the **Confirm key**.

The Stream 2 will attempt to connect to the selected wireless network. The Stream 2 will announce "Please wait" whilst it is attempting to connect to the wireless network.

If the connection attempt is successful, you will be prompted "Connected to xx", where "xx" is the name of the selected network.

OR

If the connection attempt is unsuccessful, you will be prompted "Unable to connect to xx", where "xx" is the selected network's SSID (name).

You will then be placed back at the "Enter password" prompt, where you can type in the appropriate wireless network key again and make another attempt to connect to the selected wireless network.

When the connection has been made successfully, you will now be prompted to enter a nickname. This is a meaningful name to refer to the connection by. The Stream 2's keypad will automatically be put into the text entry mode at this point. Use the standard Stream 2 text entry method. Type the desired nickname for the network, using the same text entry. Then, press the **Confirm key**.

You will then be prompted "Connected to xx", where "xx" is the new nickname that you have set for this wireless network connection.

The Stream 2 is now connected to the wireless network.

You can now exit the Wireless Menu by pressing the **Cancel (Star) key**.

Importing a network configuration to the Stream

It is possible to import a network configuration from a PC to the Stream 2, via the HumanWare Companion program. The Stream 2 can then use the imported network configuration to establish the specified wireless network connection.

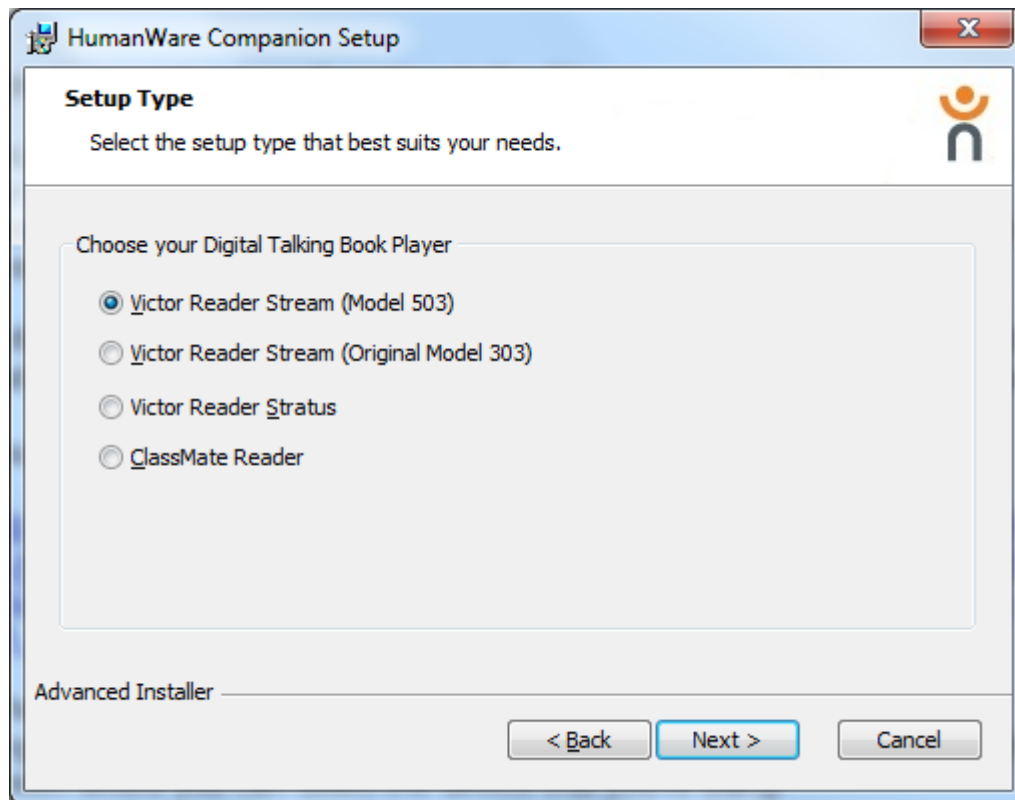
Before you can import a network configuration to the Stream, it is required that you download the latest version of the HumanWare Companion software.

You can download this software from the following weblink:

<http://support.humanware.com/index.php?Action=Page.Link&PageLink=6&ItemLink=2804&To=Site%2FFiles%2Fa%2F06cc20404d351cbaa2520fcd0d5adc>

[3%2F0835eb520e3af1bbd8169944fb845fac%2FHumanWareCompanion-DA DE EN FR NL NO SV-3 5 12.exe](#)

When you have downloaded and run the file, after selecting the desired language and accepting the license agreement, you will be presented with a screen where you can select the HumanWare device that you're using.



Ensure that you select the “Victor Reader Stream (Model 503)” option, and then select the Next button. You can then install the software.

When the software has been installed, you can then proceed from here.

A network configuration is imported to the Stream SD card. There are two options for importing the configuration to the card;

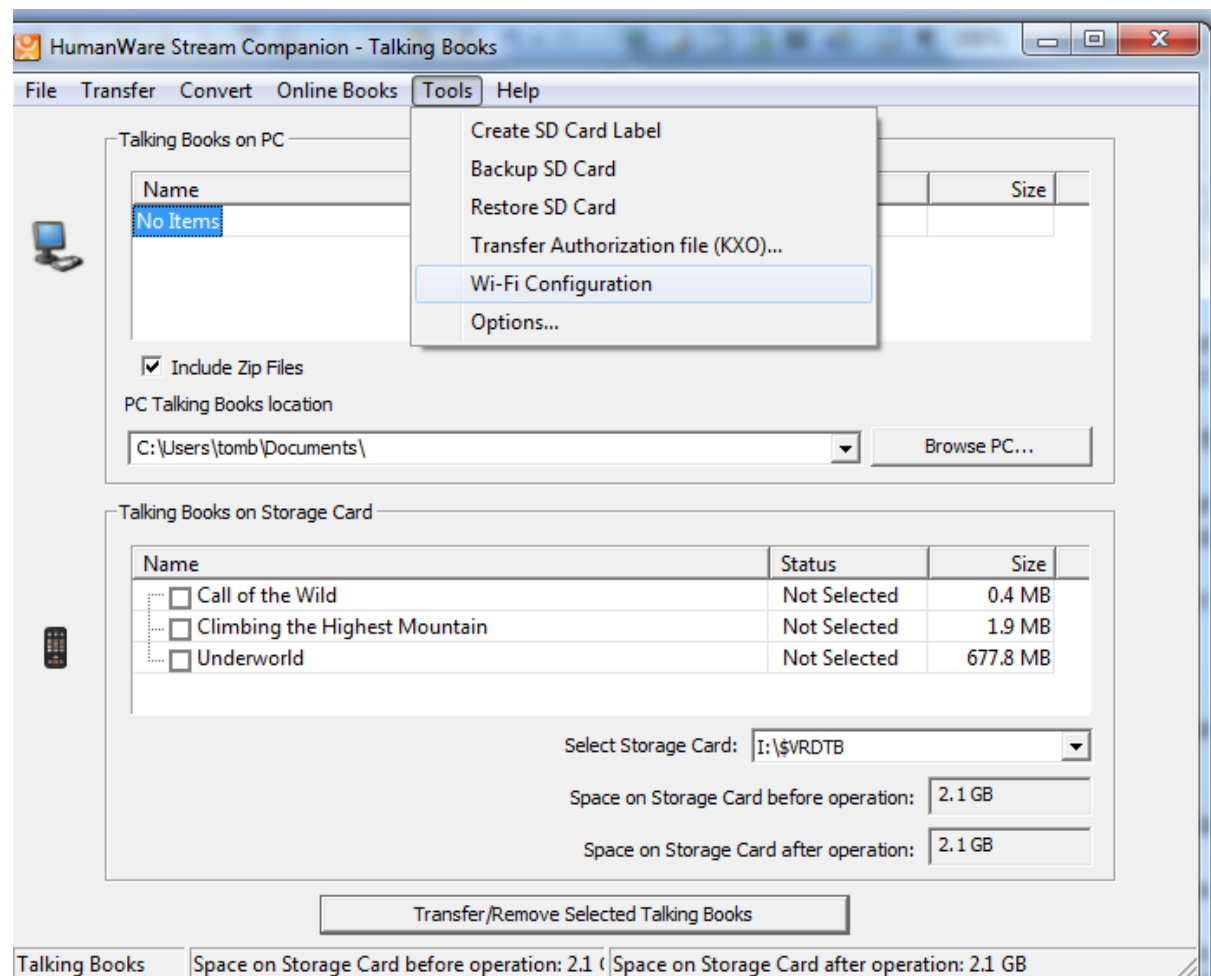
- Insert the Stream SD card into a card reader in the PC

Or;

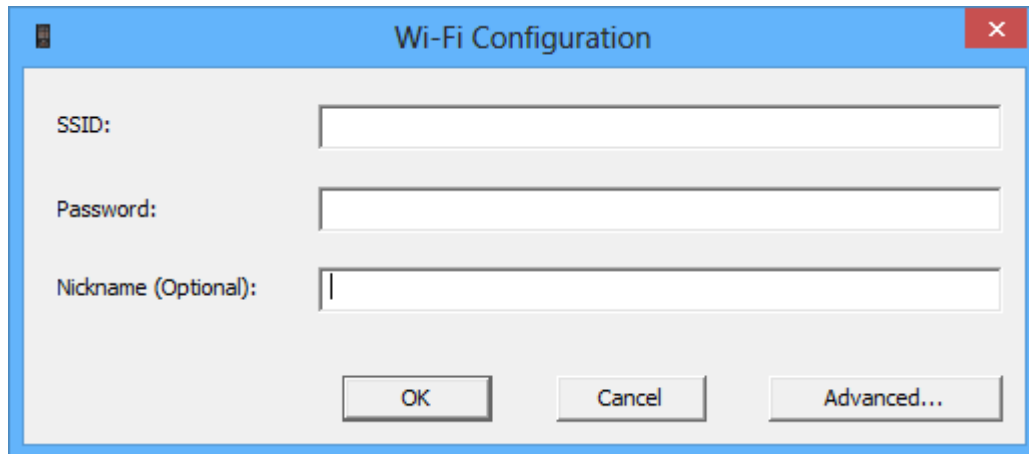
- Insert the Stream SD card into the Stream 2, and then connect the Stream 2 to the PC via USB.

You can then launch the HumanWare Companion program.

In the HumanWare Companion program window, select the Tools item on the top menu toolbar to open the Tools Menu. In the Tools Menu, select the Wi-Fi Configuration item.



The Wi-Fi Configuration dialog box will be displayed.

A screenshot of a 'Wi-Fi Configuration' dialog box. The dialog has a blue title bar with a close button (X) in the top right corner. Inside the dialog, there are three text input fields: 'SSID:', 'Password:', and 'Nickname (Optional):'. Below these fields are three buttons: 'OK', 'Cancel', and 'Advanced...'. The 'Advanced...' button is disabled (grayed out).

This is where you specify the appropriate details for the wireless network that you want the Stream 2 to connect to.

In the SSID text field, type the SSID (network name) for the wireless network.

In the Password text field, type the wireless key (password) for the wireless network.

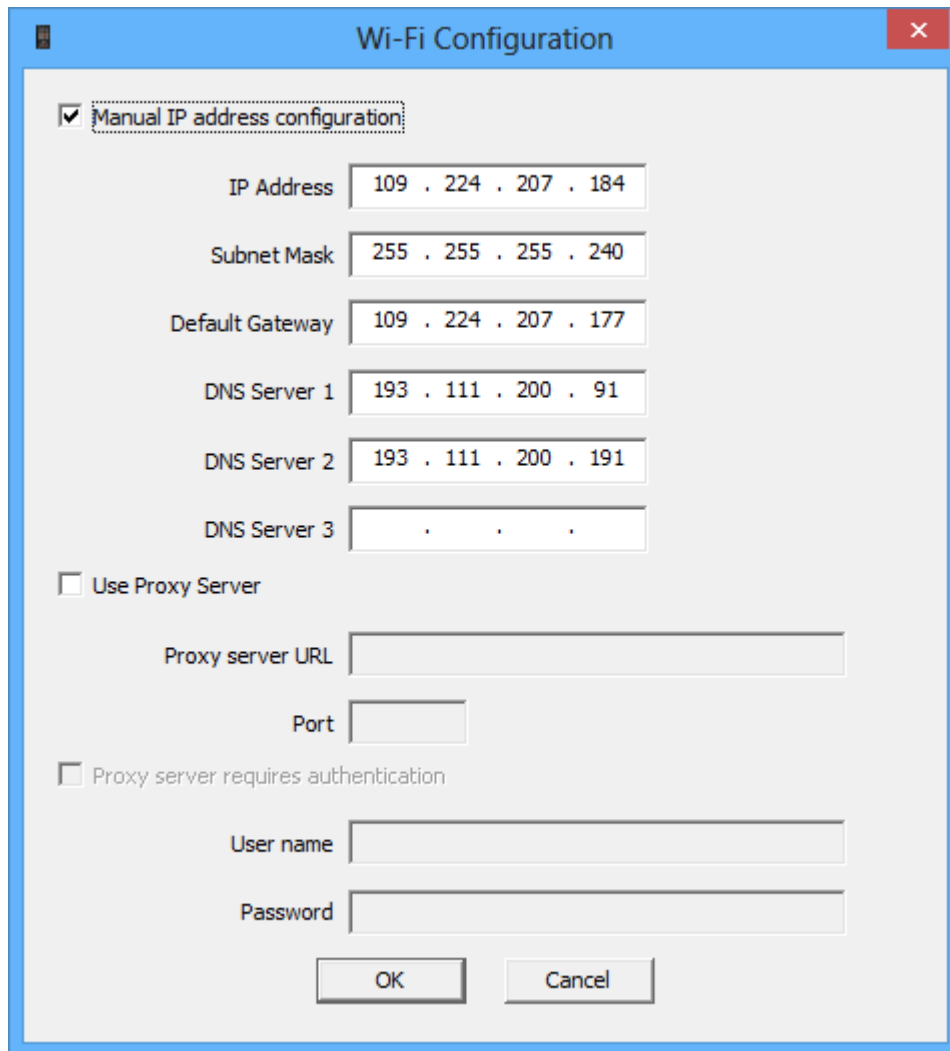
In the Nickname text field, type a meaningful name that will be used to refer to the network connection. Note that this does not affect the settings or the connection. It is also an optional field.

If a nickname is entered here, the Stream 2 will refer to this network connection by this nickname.

If this field is left blank, the Stream 2 will refer to this network connection by the SSID.

Note: If the network that you are connecting to has a more advanced configuration, with a static IP address being used, you will need to select the Advanced button.

The Advanced Wi-Fi Configuration dialog will then be displayed.

The image shows a 'Wi-Fi Configuration' dialog box with a blue title bar and a red close button. The 'Manual IP address configuration' checkbox is checked. The fields are filled with the following values: IP Address (109 . 224 . 207 . 184), Subnet Mask (255 . 255 . 255 . 240), Default Gateway (109 . 224 . 207 . 177), DNS Server 1 (193 . 111 . 200 . 91), DNS Server 2 (193 . 111 . 200 . 191), and DNS Server 3 (. . .). The 'Use Proxy Server' checkbox is unchecked, and the 'Proxy server requires authentication' checkbox is also unchecked. The 'Proxy server URL' and 'Port' fields are empty. The 'User name' and 'Password' fields are also empty. At the bottom are 'OK' and 'Cancel' buttons.

Wi-Fi Configuration

☒ Manual IP address configuration

IP Address 109 . 224 . 207 . 184

Subnet Mask 255 . 255 . 255 . 240

Default Gateway 109 . 224 . 207 . 177

DNS Server 1 193 . 111 . 200 . 91

DNS Server 2 193 . 111 . 200 . 191

DNS Server 3 . . .

☐ Use Proxy Server

Proxy server URL

Port

☐ Proxy server requires authentication

User name

Password

OK Cancel

In this dialog, you can specify the static IP address configuration in the appropriate fields.

When you have completed the details, select the OK button.

You will then be placed back at the general Wi-Fi Configuration dialog. Select the OK button to complete the configuration.

The wireless network configuration will be imported into the Stream 2. This network configuration will now be available, but it is required that you import the configuration from the SD card into the Stream itself.

To do this, ensure that the Stream is turned on, with the SD card inserted.

Press the **Online button** to open the Online bookshelf.

Press **Key 7** to open the Wireless Menu.

Press **Key 8** until you get to the "Import a network configuration from file" option. Then, press the **Confirm button**.

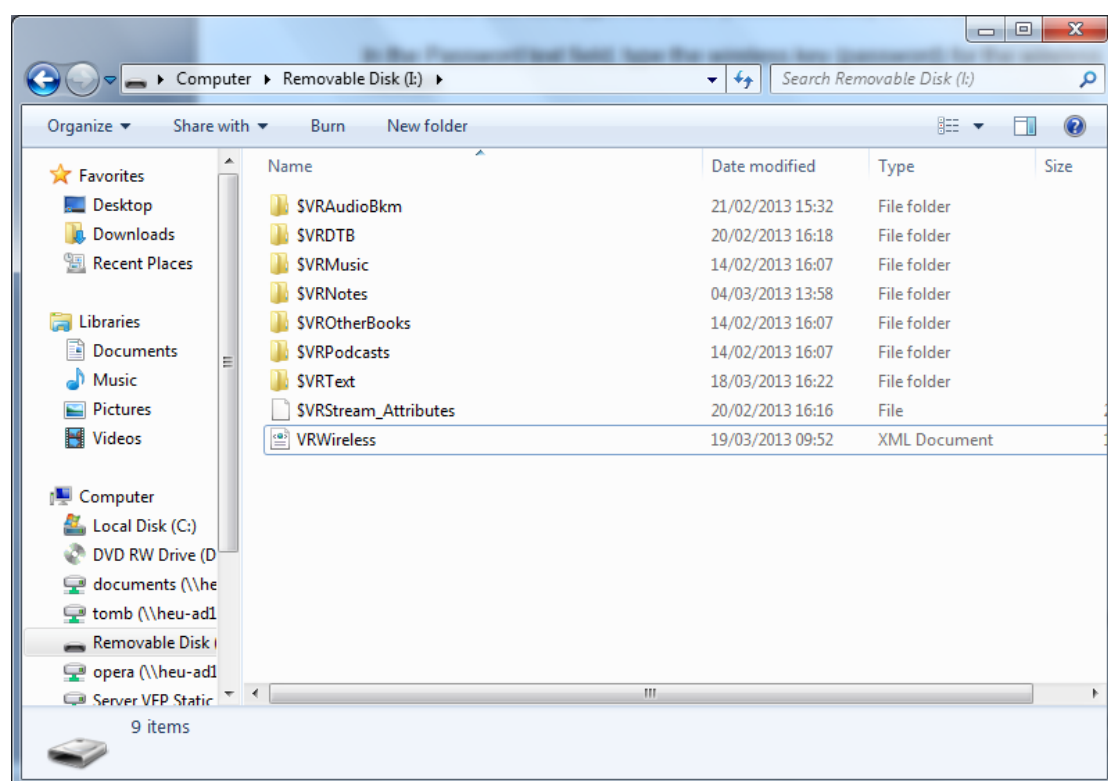
The Stream will attempt to import the network configuration. If this is successful, you will be prompted that the network configuration was imported successfully.

Note: If the configuration was not imported successfully, you will be informed of this. In general, this can happen because the network details specified in the configuration are incorrect, or the network/router is not functioning. When you attempt to import a configuration, the Stream attempts to connect to the network using the configuration's details and if this attempt is unsuccessful, it results in a failure to import the configuration. The Stream will only import configurations that it can successfully verify and connect to.

If you are unsuccessful, it is required that you go back and check the details entered into the configuration in the Companion and edit them if necessary, then attempt to import it again.

Note: All network configurations that have been imported from the HumanWare Companion program onto the Stream 2 are saved in a file on the Stream SD card. The file is named "VRWireless", and it is an XML file, saved on the root (top level) of the SD card.

It is possible to open this file and edit it directly.



Selecting a wireless network to reconnect to

You can use the “Launch a connection” option in the Wireless Menu to have the Stream 2 reconnect to a wireless network that it has been set up with before.

By default, the Stream 2 will automatically connect to the best available wireless network that is in range. This happens when WiFi is enabled on the Stream 2, and no further user intervention is required. If, however, you want to manually select the wireless network that you want the Stream 2 to connect to, you can do this.

To select a wireless network to reconnect to, follow these steps;

Press the Online key, then press **Key 7**. You will be placed in the Wireless Menu.

Press **Key 8** until you get to the "Launch a connection" item. Press the Confirm key.

You will be placed in the list of wireless network connections that have been set up previously on the Stream 2 unit.

Use the **Keys 2 and 8** to move through the list. To select a wireless network to connect to, move to the desired network in the list, and then press the **Confirm key**.

The Stream 2 will attempt to connect to the selected wireless network. The Stream 2 will announce "Please wait" whilst it is attempting to connect to the wireless network.

If the connection attempt is successful, you will be prompted "Connected to xx", where "xx" is the name of the selected network.

OR

If the connection attempt is unsuccessful, you will be prompted "Unable to connect to xx", where "xx" is the selected network's SSID (name).

You will then be placed back in the Wireless Menu. To exit the Wireless Menu, press the **Cancel (Star) key**.

Deleting a network connection

It is possible to delete a wireless network connection that you have previously set up on the Stream 2.

To delete an existing network connection, follow these steps;

Press the **Online key**, then press **Key 7**. You will be placed in the Wireless Menu.

Press **Key 8** until you get to the "Delete a connection" item. Press the **Confirm key**.

You will be placed in the list of wireless network connections that have been set up previously on the Stream 2 unit.

Use the **Keys 2 and 8** to move through the list. To select a wireless network to delete, move to the desired network in the list, and then press the **Confirm key**.

You will be prompted "Delete xx. Please confirm with Play/Stop or cancel with any other key".

To confirm deletion of the network connection, press the **Confirm key**.

If you want to cancel the deletion of the network connection, press any other key.

You will be placed back in the Wireless Menu.

Validating a network connection

It is possible to validate a wireless network connection that you have previously set up on the Stream 2.

This feature is useful for checking that the wireless network connection is active and has internet access. When you validate a network connection, the Stream will access a special page on the HumanWare website. If successful, the Stream will download a short message from that page and this will be saved as a text file which will be stored in the \$VRText bookshelf folder on your Stream SD card.

To validate the current wireless network connection, follow these steps;

Press the **Online key**, then press **Key 7**. You will be placed in the Wireless Menu.

Press **Key 8** until you get to the "Validate connection" item. Press the **Confirm key**.

The Stream 2 will announce "Please wait" whilst it is validating the current wireless network connection.

If the connection cannot be validated, you will be prompted with an error message.

If the connection was validated successfully, you will be prompted with a message indicating this. The confirmation text file will be available in the Text bookshelf on the Stream 2.

You can play the text file by pressing the **Play/Pause key**.

Updating the Stream 2's software via wireless network connection

Currently, the only feature supported when the Stream 2 is connected to a wireless network with internet access is the downloading of software updates automatically, via the internet connection.

To check for Stream 2 software updates via the wireless network internet connection, follow these steps;

Ensure that the Stream 2 has an active connection to the internet via a configured wireless network connection.

Ensure that the Stream 2 is connected to mains power via a universal USB AC adapter.

Turn the Stream 2 on. Press the **Online key**. If the Stream 2 announces that it is in Airplane Mode, press and hold the **Online key** to disable Airplane Mode. The Stream 2 will now automatically check for any available software updates. If an update is available, you will be informed of this. To start the download of the software update, press the **Play/Pause key**. If you don't want to download the update at this time, press any other button.

If you have chosen to download the update, the Stream 2 will begin the download. The Stream 2 will announce the download status in percentage every few seconds. The download time will vary depending on the speed of the internet connection (via the wireless network that the Stream 2 is connected to currently). Once the download has been completed, the Stream 2 will prompt you to confirm that you want to proceed with the software update.

Press the **Play/Pause key** to start the software update. If you don't want to update the software at this time, press any other button.

If you have chosen to update the software, the Stream 2 will begin the software update. The Stream 2 will announce the update status in percentage terms every few seconds. Once the software update has been completed, the Stream 2 will announce the new software version number and it will power itself off.

When the Stream 2 has been powered off, it is now OK to disconnect the Stream 2 from the mains power connection.